

Location:

Industrial and Operations Engineering
University of Michigan
G699 IOE, 1205 Beal Avenue
Ann Arbor, MI 48109-2117

Tuition: \$720.00

Faculty: The program will be presented by University of Michigan faculty and staff.*

Don B. Chaffin, PhD
Sheryl S. Ulin, PhD, CPE
Charles B. Woolley, MS, CPE
Thomas J. Armstrong, PhD, CPE, CIH

General Information:

Pre-registration is required and will be accepted on a first-come, first served basis. The fee covers course materials, break refreshments and lunches. Cancellation notification must be received no later than April 15, 2014 in order to qualify for a refund, less a \$75 administrative fee. Substitute attendees are welcome. In the unlikely event that the program must be cancelled, the entire submitted registration fee will be refunded without further liability on the part of the organizers. Telephone registrations are accepted conditionally upon the receipt of a completed registration form with payment.

For more information and to register online:

www.umcohse-programs.org

Hotel Accommodations:

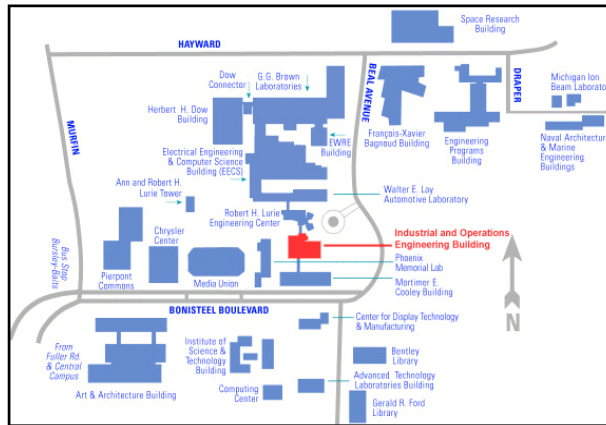
Visit our website for more information about local hotels that are offering group rates:

<http://cohse.umich.edu/continuing-education/calendar/3dsspp>

Hotels will offer free shuttles to and from the University.

Parking:

Pre-paid university parking passes are available for purchase (\$24). Metered parking is also available.

**The Regents of the University**

Julia Donovan Darlow (Ann Arbor), Laurence B. Deitch (Bingham Farms), Denise Ilitch, Olivia P. Maynard (Goodrich), Andrea Fischer Newman (Ann Arbor), Andrew C. Richner (Grosse Pointe Park), S. Martin Taylor (Grosse Pointe Farms), Katherine E. White (Ann Arbor), Mary Sue Coleman (*ex officio*)

Center for Occupational Health and Safety Engineering

University of Michigan
1205 Beal Avenue—IOE Building
Ann Arbor, MI 48109-2117

Email: ce.programs@umich.edu

Phone: 734-763-2243

Fax: 734-764-3451

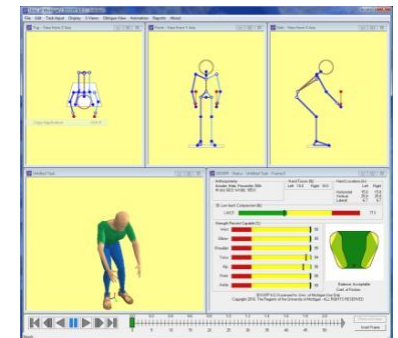
Look for upcoming program
announcements at:
www.umcohse-programs.org



Ergonomics Workshop:

Using the 3D Static Strength Prediction Program™

May 1 - 2, 2014



IOE Building
The University of Michigan
Ann Arbor, MI



USING THE 3D STATIC STRENGTH PREDICTION PROGRAM™

Time and Date:

Thursday, May 1—Friday, May 2, 2014

8:00 am—4:30 pm

Registration: May 1 from 7:45—8:15 am

Summary of Topics:*

Getting Started and Operational Overview

Anthropometry

Biomechanical Basis of the 3DSSPP

Biomechanical Computations Related to Strength

Biomechanical Computations Related to Low Back Spine Compression

Balance Considerations

3D Static Strength Prediction Program in Practice

Use of Google SketchUp

Motion and Additional Features of the 3DSSPP

Software Exercises: Posture and Force

Hands-On Exercises: Reach, Strength, Spine Compression and other Case Studies

*Program faculty and topics are subject to revision

Objective:

At the conclusion of this program, the attendee should: know when and where the 3DSSPP™ can be applied; know what workplace information is needed to use the software and how to collect it; know how to operate the 3DSSPP™; and be able to interpret the output from the program.

Description:

Manual materials handling activities present significant ergonomic challenges for workers and are associated with many musculoskeletal disorders such as strains, sprains and low back pain. The 3D Static Strength Prediction Program™ (3DSSPP™) is an ergonomics job analysis and design tool developed by the University of Michigan Center for Ergonomics to quantify biomechanical requirements during manual materials handling tasks. This two day workshop is devoted to training individuals with an ergonomics background to use the computer software and interpret its output.

This workshop will include lectures with reinforcing hands-on computer workshop activities, supervised by course instructors. Biomechanics principles will be reviewed, but this should be refresher information for attendees. Enrollment will be limited to ensure that all attendees will have access to a computer throughout the course. The 3DSSPP™ Version 6 will be used in this workshop.

Who Should Attend:

This course is intended for those who are responsible for the prevention of injuries and illnesses in the workplace, particularly safety and health personnel, industrial hygienists, physicians, nurses, workplace design engineers and management and labor representatives. This is not an introductory level program.

Accreditation:

An application for 1.3 CEUs was submitted to the University of Michigan for this course.

ABIH has previously awarded CM credit for this event. The current event contains 13 hours which can be claimed for CM credit.

Software:

Extensive information about the 3DSSPP™ software, including Version 6 upgrade procedures, can be obtained at:

www.umichergo.org

Registration:

Register online at:

<http://cohse.umich.edu/continuing-education/calendar/3dsspp>

Or fill out the form below:

Name: _____

Company: _____

Address: _____

City: _____ St: _____

Zip: _____

Date of Birth: _____

Title: _____

Phone number: _____

Email: _____

Please enclose a payment of \$720.00 with your completed form. Add \$24 for pre-paid university parking pass. This fee includes tuition, handouts, refreshments, lunches and applicable sales taxes. Make checks payable to the **University of Michigan**. We accept Visa, Mastercard or American Express.

Type of card: _____

Credit card number: _____

Expiration: _____ Security code: _____

Name on card: _____

Signature: _____